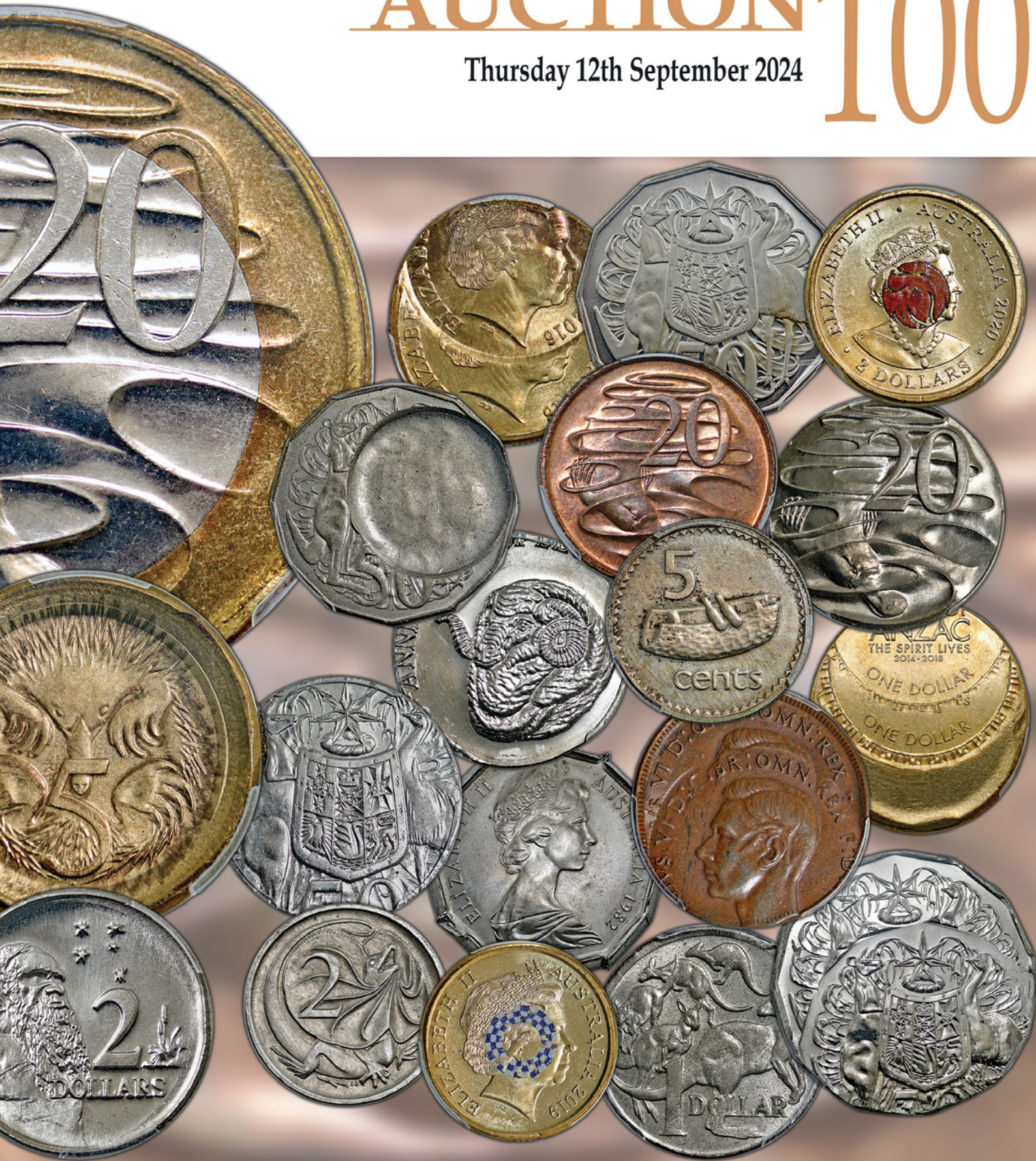


*Eridmatos Collection*

# **AUCTION** 100

Thursday 12th September 2024





LOT 34



LOT 41



LOT 42



LOT 58

# Mistruck, Error and Variety Coins

## Penny



- 1 1944. Double-struck, with the 2nd strike 25% off-centre. PCGS graded AU 55 (37155111). Some marks from striking, some lustrous mint brown. A really striking example of this rare error type, with lovely clear doubling of design on both sides. Rare. *aUNC*

## Threepence



- 2 1964. Struck 35% off-centre with a large slightly raised rim lip. PCGS graded MS 62 (37155112). Bright bloom. Scarce. *UNC/Ch.UNC*

## One Cent



- 3 1971. Struck on an uncertain cupro-nickel blank (2.55g/17.5mm), likely as a trial (a few similar examples on silver, lead and white metal have been noted previously). Thicker than a standard 1 Cent. Deliberate deep scratches across Obverse (likely to void) and some marks to Reverse. Ex IAG S97 March 2023 (Lot 1977). Rare. *aEF*



- 4 1974. Die cap error, with severely dished Reverse and spread flan Obverse. PCGS graded MS 64 RB (30336011). Nice mint brown and red lustre and a great example of this rare error type. *Ch.UNC/GEM*



- 5 N/D (1966-1984). Struck from two Reverse dies. NGC graded MS 65 RB (2058347-001). Dark brown with some mint red. Dies rotated 180 degrees as is usual for this error. Very rare in this denomination, being the only such one we have seen. *Ch.UNC*

## Two Cent



- 6 1980. Struck through Obverse with a long hooked object, approx 4mm x 18mm. PCGS graded MS 63 RD (37474816). Mostly bright mint red, especially on the Obverse. A very interesting and unique error. *Ch.UNC*



- 7 1981. Without SD initials variety. PCGS graded MS 64 RD (83661407). Bright mint red and scarce as such. *Ch.UNC/GEM*



8 1988. Struck on a 1 Cent planchet, slightly off-centre causing LH legend to be missing. PCGS graded MS 64 RD (37155113). Mostly mint red. Very scarce as such. *Ch.UNC/GEM*



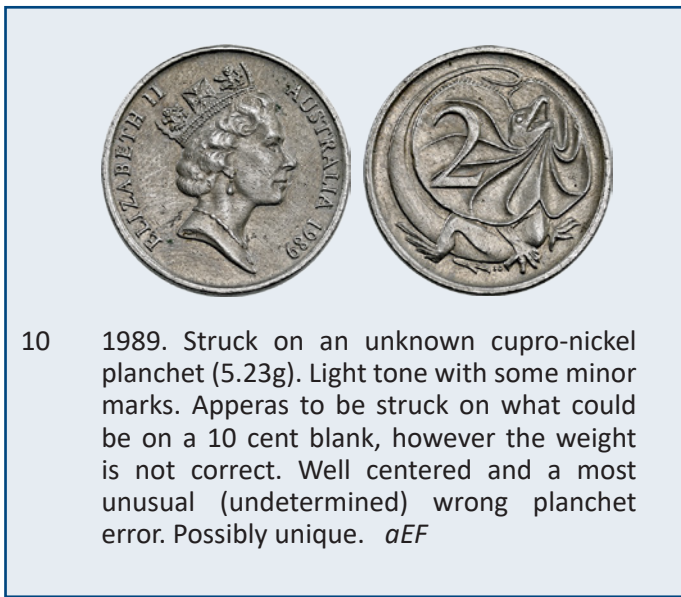
12 N/D (1966-1998). Struck on a 5 Cent cupro-nickel planchet (2.82g). Slight weakness from striking with significant edge lettering missing. Very rare with only a few such examples known. *aEF*



9 1988. Struck on a 1 Cent planchet. PCGS graded MS 64 RD (37229873). Bright nearly full mint red and rare as such. *Ch.UNC/GEM*



13 N/D (1966-2016). Struck from two Reverse dies. PCGS graded MS 63 RB (240727705). Dies rotated 180 degrees as is usual for this error. Dark toned with mint purple/red lustre. Very rare, especially in this denomination with only a few known. *Ch.UNC*



10 1989. Struck on an unknown cupro-nickel planchet (5.23g). Light tone with some minor marks. Appears to be struck on what could be on a 10 cent blank, however the weight is not correct. Well centered and a most unusual (undetermined) wrong planchet error. Possibly unique. *aEF*

### Five Cent



14 1966. Struck 30% off-centre large rim lip. PCGS graded MS 64 (40727703). Light tone with bloom. Very rare, especially as an early high grade example. *Ch.UNC/GEM*



11 N/D (1966-1984) no SD. Struck massively (75%) off-centre, leaving just a trace of stepped design. PCGS graded MS 63 BN (84618020). Brown lustre. A significant error and rare. *Ch.UNC*



15 1977. Split planchet, with both halves included. *N/A*



16 1978. Mule with a Fiji 5 Cent traditional boat Reverse and Australian QE II Obverse. PCGS graded GENUINE - Cleaned - AU Detail (40727707). Possibly once cleaned with some light surface hairlines and some light tone that in no way detracts from this key decimal error. Very rare. *aUNC*



17 1980. Full Reverse brockage. PCGS graded MS 62 (40727704). Light tone. A nice clear portrait and rare as such. Ex IAG FS 10 (Lot 411). *UNC/Ch.UNC*



20 2007. Double Obverse; struck with two Obverse dies, rotated 180 degrees. PCGS graded MS 64 (34962700). Bright mint bloom. A few known of this error with this possibly the finest known, and certainly the best we have seen. Very rare. *Ch.UNC/GEM*



18 1982. Struck against another blank with a partial Reversed Obverse brockage image to 80% on Reverse. PCGS graded MS 65 (37326734). Light tone with bloom. Rare, especially in this grade. *GEM UNC*



19 1989. Struck on a cop/zinc 1 Cent planchet. PCGS graded MS 64 RB (37326731). Partial rim missing on Reverse. Bright red mint lustre and one of the best example known of this error. *Ch.UNC/GEM*



21 2007. Struck with two Obverse dies. PCGS graded AU 58 (37155114). Dies rotated 180 degrees as is usual for this error. Light tone with some bloom and very rare. *aU/UNC*



22 2014. Struck on a 2 Dollar planchet, with a large spread flange and slightly raised rims on both sides making this a truly spectacular and unique error. PCGS graded MS 63 (38446523). Extremely rare, if not unique. *Ch.UNC*



26 1975. Clamshell partial split planchet. PCGS graded MS 63 (37474808). Light tone, one side slightly lifted. Interesting and scarce. *UNC/Ch.UNC*



23 N/D (1966-1984). Struck through die cap error. PCGS graded MS 63 (37474807). Light tone with a few Obverse marks. A light impression of the Queens portrait on Obverse. Rare. *UNC/Ch.UNC*



27 1994. Struck on a 5 Cent planchet, causing part missing legend on Obverse. PCGS graded MS 65 (83914941). Bright mint bloom. Very rare. *GEM UNC*



24 N/D (1999-2018). Struck 35% off-centre with a large slightly raised rim lip. PCGS graded MS 64 (36891847). Bright mint bloom. Very scarce. *Ch.UNC/GEM*

### Twenty Cent



28 1966L. Wavy baseline of 2 variety. PCGS graded MS 64 (81785827). Light old tone. Very scarce in this grade. *Ch.UNC/GEM*

### Ten Cent



25 1966L. Dies rotated 180 degrees. PCGS graded MS 64 (36480302). Light old tone with some bloom. Rare on decimal issues, especially on an early high grade example. *Ch.UNC/GEM*



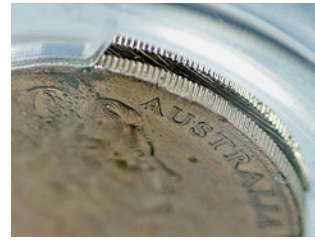
29 1966L. Wavy baseline of 2 variety. PCGS graded MS 65 (84996163). Light tone. Rare as such with only three graded higher. *GEM UNC*



30 1972. Struck on a 10 Cent planchet, causing most of legend to be missing. PCGS graded MS 64 (83914943). Light tone with bloom. A Very rare major decimal error, and in high grade. *Ch.UNC/GEM*



32 1979. Clamshell partial split planchet. PCGS graded MS 64 (37474810). Some bloom. Scarce and interesting. *Ch.UNC*



31 1975. Struck with two Obverse dies. Dies rotated 180 degrees as is usual for this error. Toned. Very rare. Ex IAG S 55 January 2002 (Lot 428) and S 95 May 2022 (Lot 652). *EF*



33 1996. Struck on an unknown copper planchet. PCGS graded MS 64 RB (40727706). Red and brown with bright mint lustre. The only example of this date we have seen (with a couple of the 1983 issues also known). Very rare. Ex IAG S 92 October 2020 (Lot 609). *Ch.UNC/GEM*



34 2001. Struck on a bi-metallic planchet (10.7g), likely an Iranian 250 Rials. PCGS graded MS 63 (39138561). Light tone with bright bloom. Referenced in an article in the September 2017 Edition (pg 10) of the Australasian Coin and Banknote Magazine. Possibly the most stunning Decimal coin error, believed to be only two examples known, with this easily the best in terms of grade. *Ch.UNC*

Fifty Cent



35 1970 Captain Cook. Straight edge clip to 2% (11mm) to lower right of bust. PCGS graded MS 63 (37474806). Some bloom. Scarce. *Ch.UNC*



38 1981. Obstructed strike; indented with a 2 Cent sized (21mm round) blank planchet to right of Reverse leaving a large depressed impression. PCGS graded MS 63 (81763009). The only example of this major error type we have seen, and probably unique. Ex IAG SVS 1 October 216 (Lot 516). *Ch.UNC*



36 1976. Split planchet, with both halves. PCGS graded MS 63 (39845546/7) in custom double slab. Light tone and nice matching even splits. Rare in this grade. *Ch.UNC*



39 1981 Charles and Di. Struck on an underweight, foreign planchet (9.5g), causing missing vertices. PCGS graded MS 63 (37155129). Light tone. Appears to be struck on a Hong Kong \$5 decahedral blank (9.5 grams). EX IAG Sale 86 (sold for \$11,224). A striking and extremely rare major Decimal error, and the second such example of this we have handled. Extremely rare. *Ch.UNC*



37 1976. Struck on a 20 Cent planchet. PCGS graded MS 64 (37155123). Slightly off-centre with part edge design and lettering missing from the smaller planchet. Light old tone. A very rare and possibly unique error for this year. *Ch.UNC/GEM*



40 1982 Commonwealth Games. Ramstrike error struck out of collar with even, high fins, thick edges with a slightly dished Reverse. A few minor marks from striking, however a unique and stunning major error. Ex IAG Sale 93 March 2021 (Lot 871). *UNC*





- 41 1988 Coat of Arms Mule. This year not issued with standard Coat of Arms Reverse, but was issued with the Bi-Centenary Reverse. Light hint of tone with bright bloom. In Downies box with COA. Extremely rare and important, with only 2 examples (?) known. *UNC*



- 42 1988 Coat of Arms Mule Proof. PCGS graded PR 63 DCAM (81319131). This year not issued with standard Coat of Arms Reverse, but was issued with the Bi-Centenary Reverse. Light hint of tone with bright bloom. Excessively rare, and one of the key Decimal errors of the highest importance. *FDC*



- 43 1991 Decimal Currency Merino Reverse. Struck on a 10 Cent planchet. PCGS graded MS 65 (39845543). Full bright mint bloom. A significant and spectacular major error, and possibly unique. Ex IAG S 86 September 2017 (Lot 727) and S 91 (Lot 696). *GEM UNC*



- 44 1991 Decimal Currency Merino reverse. Struck on a 20 Cent planchet. PCGS graded MS 65 (42878489). Bright mint bloom. A significant and spectacular major error, and possibly unique. *GEM UNC*



45 2000 Millennium. Incuse Union Jack variety. PCGS graded MS 63 (33264940). Bright mint bloom. *Ch.UNC*



46 2000 Millennium Reverse. Struck on a 20 Cent planchet (11.28g). PCGS graded MS 64 (39845545). Slight Obverse edge lettering missing. Full bright mint bloom. A major decimal error and probably unique. Ex IAG S 90 September 2019 (Lot 825). *Ch.UNC/GEM*



47 N/D (1999-2019). Double-struck; with a sharp second strike 30% off-centre. PCGS graded MS 63 (37155122). Bright mint bloom. A major and very striking error, and very rare as such. *Ch.UNC*



48 N/D (1999-2016). Struck on a 10 Cent planchet, causing missing legend. PCGS graded MS 62 (37326729). Light tone with bloom. Very rare and a striking looking error on such a small planchet. Ex IAG OS 12 December 2018 (Lot 377). *UNC/Ch.UNC*

One Dollar



49 1984. Struck on a 10 Cent cu/ni planchet. PCGS graded MS 64 (34905186). Light tone with some underlying mint bloom. Only a handful of this error type know, but this possible the best condition example. Rare. *Ch.UNC/GEM*



50 2000 Mule. Struck with 10 Cent Obverse die. PCGS graded MS 62 (19515888). Light tone with some bloom and generally mark free apart from a few Obverse marks. Very scarce. *UNC/Ch.UNC*



51 2000 Mule. Struck with 10 Cent Obverse die. PCGS graded MS 63 (37181917). Mint bloom and generally mark free apart from a few minor Obverse marks. Rare this grade. *Ch.UNC*



52 2001 Centenary of Federation. Dies rotated 130 degrees. PCGS graded MS 65 (37155120). Light tone with mint bloom. An underrated error type, especially in later decimal issues and in near perfect mint state, and very rare as such. Rare. *GEM UNC*



53 2005. Struck slightly out of collar 2mm. PCGS graded MS 65 (81252642). Bright mint bloom. Very scarce in decimal, especially in this grade. *GEM UNC*



54 2014 Anzac Centenary. Struck twice off-center; once 25% and once 60% causing a large spread flan with a slightly raised large off center rim lip. PCGS graded MS 65 (37155128). A stunning error in beautiful condition and extremely rare, with no other graded examples. *GEM UNC*



55 2016. Struck twice, with the second strike 35% off-centre. PCGS graded MS 65 (39845548). Light tone with bright bloom. A large and sharp high grade off center striking making this a spectacular looking error. Rare as such. Ex IAG OS 12 December 2018 (Lot 381). *GEM UNC*



56 2016. Struck on an underweight c/al/n planchet (6g/23mm). PCGS graded MS 62 (37155121). Part design along Obverse edge missing due to smaller (unknown) planchet. Bright mint bloom, and a very rare (unique?) error type for this issue. Ex IAG OS 12 December 2018 (Lot 381). *Ch.UNC*



57 N/D (1985-1998). Struck massively (90%) off-centre, leaving just a trace of stepped design. PCGS graded MS 64 (34962706). A significant error and rare. *Ch.UNC/GEM*



58 **Two Dollar.** 1992. Struck on a ci/ni 5 Cent planchet. PCGS graded MS 65 (41008463). Dies rotated 90 degrees, bright mint bloom, some edge weakness to lettering from striking. Extremely rare, if not unique and a key modern decimal error. *GEM UNC*



59 2000. Struck on a Euro 10 Cent planchet, causing faint strike and details to much of the coin. PCGS graded MS 62 (26604033). Some tone. Very rare. Ex IAG PS 6 January 2016 (Lot 652). *UNC/Ch.UNC*



61 2019 Police Remembrance coloured. Colourisation error, with the colour pad-printed over the Queens portrait on the Obverse. PCGS graded MS 66 (38128279). Bright mint bloom. A high grade genuine example of this most interesting error type and very rare as such. *GEM UNC*



60 2009. Double struck, with the second strike 70% off-centre and rotated 170 degrees. PCGS graded MS 63 (33877032). Some bright mint lustre. Rare. Ex IAG PS 6 January 2016 (Lot 653). *Ch.UNC*



62 2020 Firefighters coloured. Colourisation error, with the colour pad-printed over the Queens portrait on the Obverse. PCGS graded MS 65 (41694128). Bright mint bloom. A high grade genuine example of this most interesting error type and very rare as such. *GEM UNC*



63 1970 5 Cent Die, officially lathed to cancel and over stamped FE 799. In custom RAM display case. Also includes 1970 5 Cent PCGS graded MS 65 (30886726) and two (1982) RAM Mint rolls along with a few loose assorted date 5 Cents coins that were originally glued to the display. Case inscribed ROYAL AUSTRALIAN MINT 1970 - 5C COIN DIE with an outline of the Queens portrait on the back. A unique, highly collectable and extremely rare item that fully represents the eclectic, high grade and highly desirable nature of this important collection.



64 Great Britain New Twopence 1992. Struck on a 1 Pence S-B4 planchet. PCGS graded MS 63 RB (37474802). Bright mint red, a few marks. *Ch.UNC*



67 1923. Key date. PCGS graded AU 55 (36909794). Eight pearls and centre diamond with a full clear band, glossy mint brown. Rare this grade. *aUNC*

## Other Properties

### Halfpenny



65 1914H. PCGS graded MS 63 RB (15634459). Mint red and brown. Scarce. (Coin turned 90 degrees in slab). *Ch.UNC*



68 1939. PCGS graded MS 63 BN (34010819). Brown with traces of red. *Ch.UNC*



69 1939 Roo. Key date. PCGS graded MS 64 RB (84740115). Mint brown and red lustre. Very scarce this grade. *Ch.UNC/GEM*



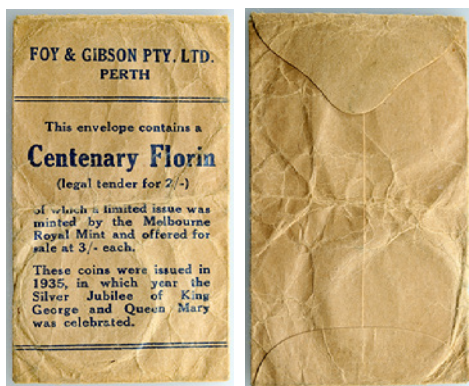
66 1923. Key date. PCGS graded AU 50 (36909794). Eight pearls with a virtually full band, some slight wear to high points but still a superior example. Very scarce. *gEF/aUNC*

### Threepence



70 1922/21 Overdate. Key date. PCGS graded VG 10 (371530043). Light tone. Good clear details for this issue with a nice clear overdate and good rims. Rare. *VG*

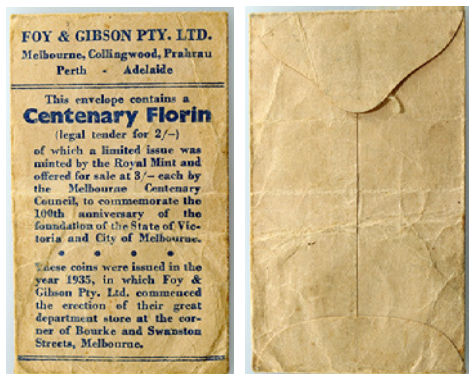
## Florin



- 71 Foy and Gibson bag, Perth. A few creases and folds, some light wear but in significantly better than average condition. Rare type. *aVF*



- 72 1934/35 Melbourne Centenary. PCGS graded MS 65 (12229956). Rounded head of rider, frosty mint bloom. *GEM UNC*



- 73 1934/35 Melbourne Centenary. PCGS graded MS 65 (32598587). Some nice old peripheral tone. With Foys bag, intact (*aVF*) and in better than average condition. (2 items total). *GEM UNC*



- 74 1939. Key date. PCGS graded MS 63 (36830191). Light tone with satin mint bloom. Scarce. *Ch.UNC*

## Penny



- 75 1959Y Proof Penny. PCGS graded PR 66 RD (28203627). Full bright matte mint red. Scarce as such. *FDC*

## Mint Sets



- 76 1966 Mint set. In RBA Operation Fastbuck presentation wallet, inscribed and presented to J. Pierson, who worked in Treasury Security in Canberra. Some light tone, inner plastic coin sheet broken. Very scarce.



77 1967 Pattern Goose Dollar, plain edge silver Proof. PCGS graded PR 64 (37123646). Bright mint bloom. *FDC*



78 1967 Pattern Goose Dollar, silver Unc. Reeded edge. PCGS graded MS 67 (83661892). Attractive blue-green old patina and very scarce in this grade. *GEM UNC*



79 France large bronze medal 1804, Coronation of Napoleon. PCGS graded SP 63 (37160074). Glossy brown lustre. *SPECIMEN*





LOT 16



LOT 22



LOT 38



LOT 47



LOT 34



INTERNATIONAL  
**AUCTION**  
GALLERIES

[www.iagauctions.com](http://www.iagauctions.com)

Ph: 07 5538 0300  
Fax: 07 5538 7296

P.O. Box 1380  
Broadbeach Qld 4218 Australia

[mail@iagauctions.com](mailto:mail@iagauctions.com)  
[www.iagauctions.com](http://www.iagauctions.com)